

# PrepSure

Excellent Preps, Excellent Crowns



A set of three ingenious crown prep instruments to monitor and confirm the occlusal clearance of abutments for successful crowns and onlays. This takes out all of the guesswork and prevents remakes and failures.

# The Problem

*“The average dentist is a chronic under-preparer. The average dentist does not know what a 1.5mm and a half looks like. I know because I am that dentist...It’s the bane of the laboratory.”*

*—Dr. Michael DiTolla  
Clinical Director, Dentsply Sirona*

Reports from lab experts state that up to 80% of crown preps are not properly done. B&B Dental Ceramic Arts needs to call 50% of their dentists to discuss cases with insufficient occlusal clearance.

This is because dentists have had to rely on just their naked-eyes, making the procedure inaccurate and inconsistent.

# Crown Failure

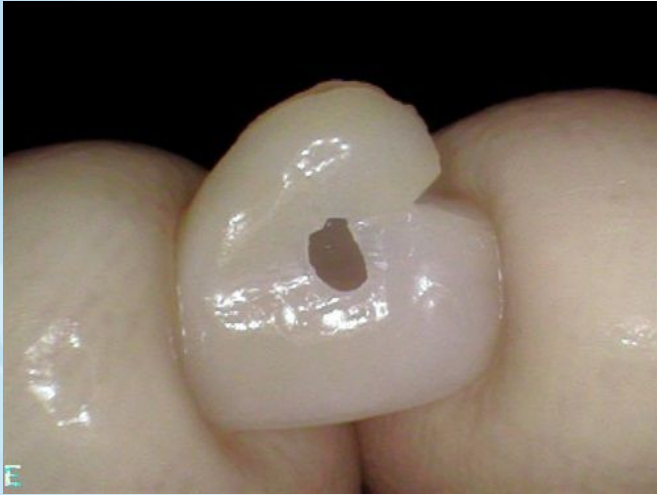


Fig 1) Perforated crown



Fig 2) Metal occlusion



Fig 3) Perforated and fractured crowns

- Insufficient occlusal clearance is a common problem
- Crowns made for incorrectly prepared abutments fracture or perforate easily
- This leads to embarrassing second impressions/digital scans or short-lived restorations = *bad patient experience*

# What is PrepSure?



PrepSure is a set of instruments designed to quickly and easily evaluate the amount of occlusal clearance prepared, improving the procedure for dentists, labs, and patients.

# Features and Benefits

- Reduces stress
- Prevents costly second impressions or scans
- Matches indications for all common crown materials
- Ideal complement to CAD/CAM workflows
- Avoids over-reduction of tooth structure
- Autoclavable for an incredible value
- Ergonomic and easy to use

# PrepSure at Chairside



*Using PrepSure makes confirming accurate crown preparation quick, easy, and comfortable...*



*...while traditional methods involve poorer posture and potentially costly guesswork*

# PrepSure in Action

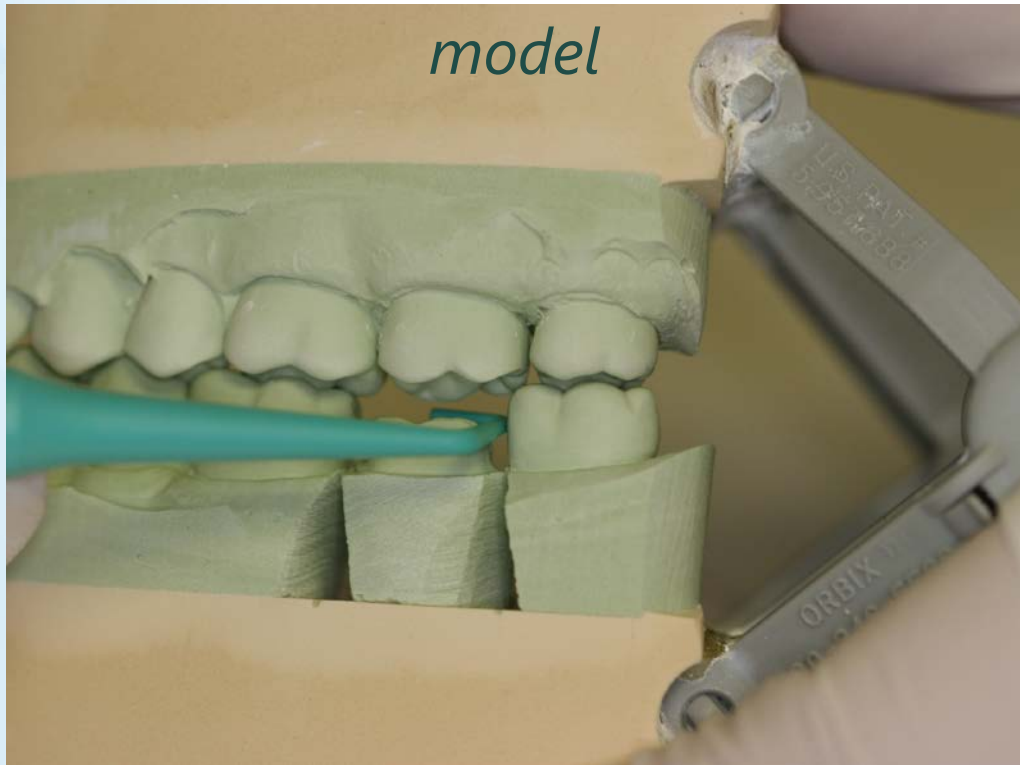


*This patient is receiving a solid zirconia crown on tooth #4. PrepSure 1.0mm is used to confirm adequate occlusal clearance.*

*Making excellent crown preps is now as easy as freely gliding the PrepSure tip over the abutment to monitor and confirm occlusal reduction.*

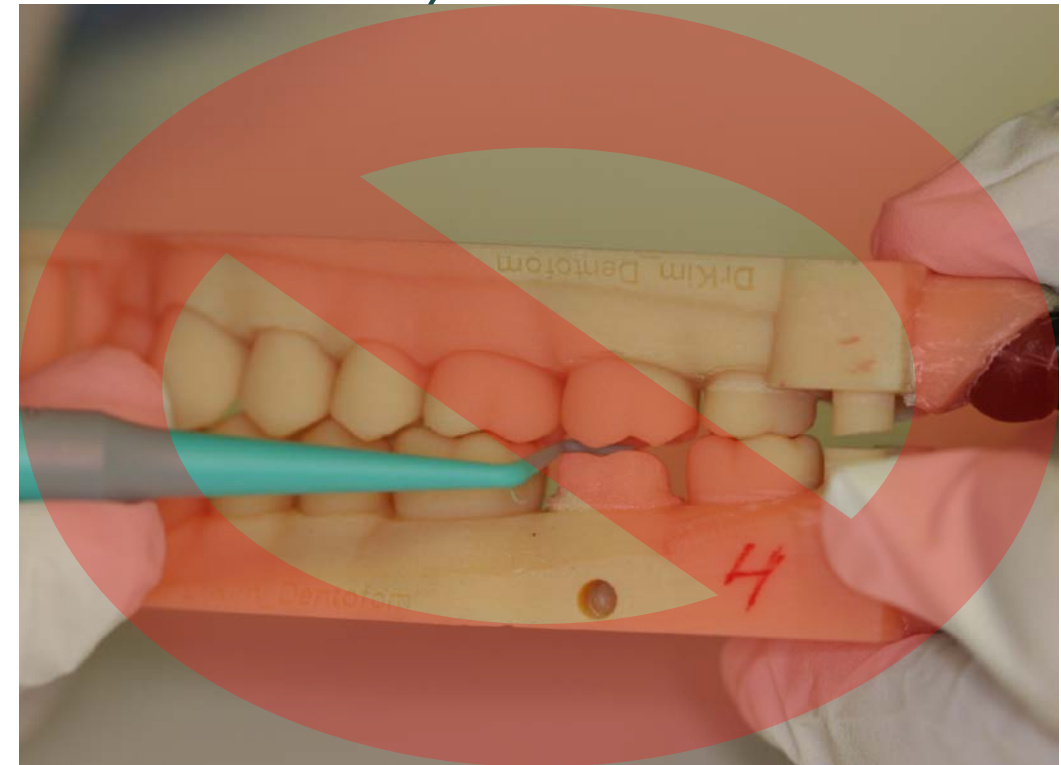
# PrepSure on Stone Models

*Stone  
model*



*PrepSure is also great in the lab,  
easily confirming clearances on all  
sides of stone models*

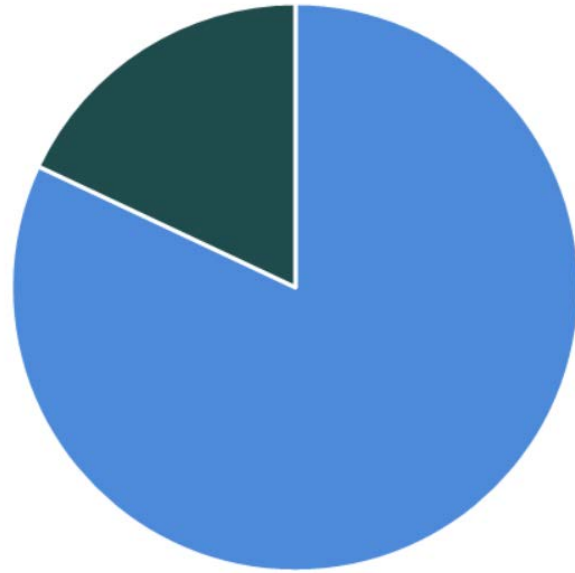
*CAD/CAM model*



*When PrepSure **cannot** glide easily  
over the crown prep, lab  
technicians should consult with the  
dentist*

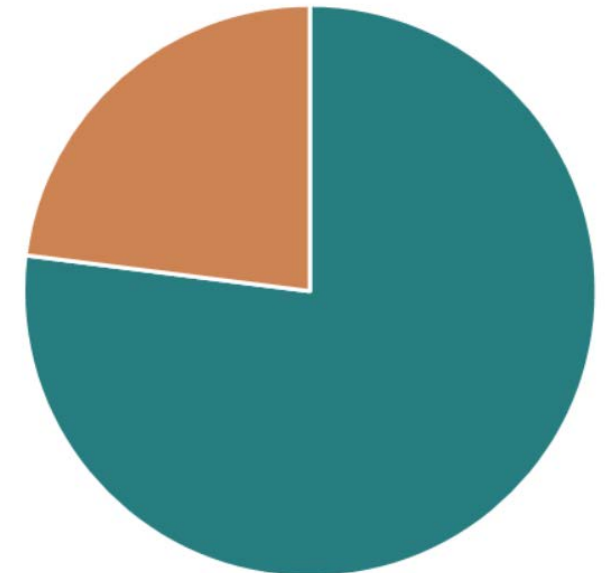


# Market Impact



**82%**

of cosmetic dentists  
most frequently  
perform crown  
procedures



**77%**

of patients are  
primarily concerned  
with the longevity of  
their crowns

# Market Impact

- Solves one of the most common problems in crown prep
- Prevents wasted materials/chair time due to second impressions or digital scans
- Improved patient experiences increases patient retention and loyalty
- Saves time at the office, the lab, and for the patient

*Bottom Line: Practices using PrepSure will see increases to productivity, profitability, and patient satisfaction.*